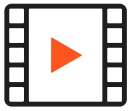


Osmosis is an engaging longitudinal curricular support tool built to clarify what students cover in class, while providing an engaging, efficient, and approachable learning experience. Our platform uses learning science, including content-chunking and multimedia design, to present complex material so that it's easier to absorb.



On-demand Illustrated Videos

- Basic science and diseases
- Case-based pathology review videos
- Clinical practice videos



Learn Pages and Assessment Items

- High-yield notes for pathology and physiology
- Board-style questions with detailed answer explanations
- Flashcards with spaced repetition

The screenshot shows the Osmosis interface for a video titled "Dilated cardiomyopathy". The video player is at the top, showing a heart diagram with handwritten notes in red and black ink. The notes describe the pathophysiology: "DILATED CARDIOMYOPATHY" leads to "WEAK CONTRACTIONS" (SYSTOLE), which results in "LESS PUMPED OUT (LOWER STROKE VOLUME)", leading to "BIVENTRICULAR CONGESTIVE HEART FAILURE" (SYSTOLE). The diagram also labels "LUNGS" and "BODY".

Numbered callouts point to various interface elements:

- 1:** "Add to playlist" button
- 2:** "Pathology" dropdown menu in the sidebar
- 3:** "Assessments" section in the sidebar
- 4:** "Print" button for the notes
- 5:** "High Yield Notes" section
- 6:** Video player controls (play, pause, progress bar)

- 1 Students can learn visually and control what comes next
- 2 Quickly scan video transcripts to sync with learning objectives
- 3 Assessments to reinforce learning objectives
- 4 Speed controls for efficient consumption
- 5 Content accessible to all via closed captioning
- 6 Video chapters allow for bite-sized learning
- + Study Schedule, Analytics Dashboard, and more!

How Do Partner Institutions Use Osmosis?

• **Pre-work:** Pre-work for flipped classrooms, small group sessions, or case-based learning, so students come prepared to participate in class.

• **Active Self-Directed Learning:** Students make playlists, create Study Schedules, and quiz themselves on weak or borderline topics, while tracking progress through their analytics dashboard.

• **In-class:** Videos and assessment items can be played during class to support student engagement in a group or during pair-and-share sessions.

• **Early Course Correction and Remediation:** Students utilize faculty-assigned or self-created playlists and study schedules to strengthen knowledge deficits. Dashboard analytics help guide discussions between students and faculty on areas of focus.

Aligning Osmosis to Your Course



Osmosis Video Reference Sheet

Contact your Account Executive to explore a reference sheet of all videos within the Osmosis platform.



Curriculum Alignment

Ask us how our curriculum alignment team can help match your course objective list or syllabus to Osmosis resources.



Creating an Osmosis Playlist



Faculty Analytics Walkthrough



And so Much More



Free Student Trials

Have learners in a course, cohort, or full program try out Osmosis for a month, block, or semester to see usage analytics, and get student feedback. Instructors receive free accounts to review Osmosis independently and see student data.



Osmosis Continuing Education Credit

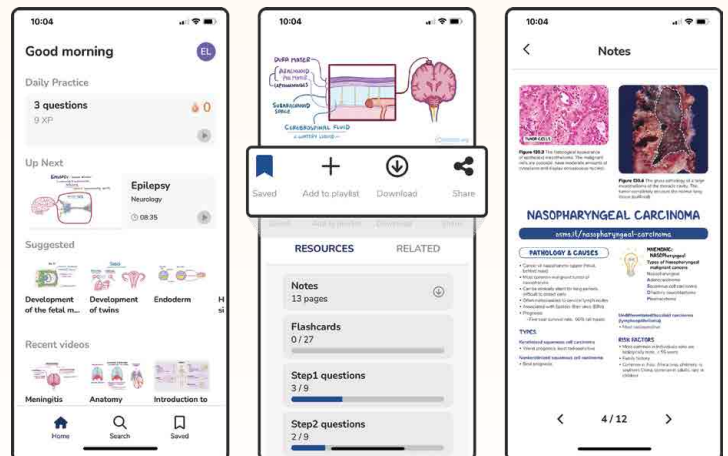
Using Osmosis, you can earn AMA PRA Category 1 credits based on video length and the number of quiz questions completed. Credits are automatically calculated in your Osmosis profile as a faculty member.



Explore Osmosis Educators' Ultimate Guides

- Programmatic Assessment
- Flipped Classrooms
- And More!

Osmosis Mobile App



Students can watch Osmosis videos offline and review assessment items anywhere with the Osmosis mobile app, available on both [iOS](#) or [Android](#).

Have comments or questions?

Reach out to your Account Executive or our live support team at support@osmosis.org or in the [chat box](#).