

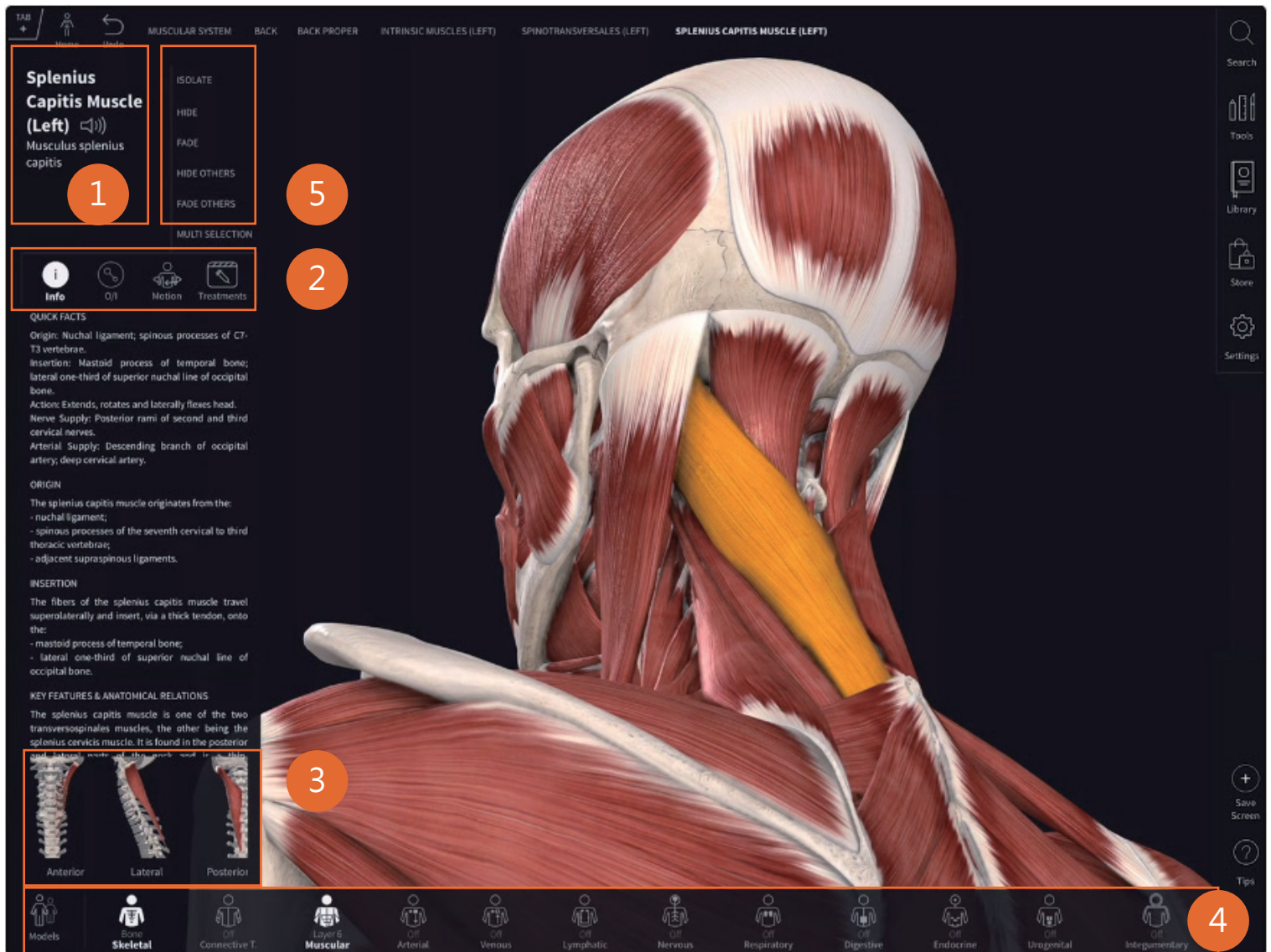


Complete **Anatomy** Tutorials

Discover how the world's most advanced 3D anatomy platform with full female model and newly added radiology images advancing the anatomy learning.

Infobox

You will see information on the structure, and system-specific tools such as Muscle Motion, Origin and Insertion, and Bone Parts and Surfaces, depending on the type of structure selected.



1. Infobox

The title of the structure appears at the top of the infobox in Chinese, English and Latin.

2. System-specific Tools

Includes Muscle Motion, Origin and Insertion, Bone Parts and Surfaces functionalities.

• Muscle Motion

You can choose a different motion from the infobox, control the motion using the controls at the bottom of the screen, or explore the motion by rotating and panning around the model.

• Muscle Origin & Insertion

Origin and Insertion points are available as a layer of the Skeletal System. Tap the Skeletal System icon, and press the "+" button to view the Insertion layers (the fourth layers of the system). Then press the "-" back to the origin.

• Bone Parts, Surfaces & Landmarks

You will be taken into Isolate Mode to view the Part, Surface, or Landmark more clearly.

3. Preset Views

At the bottom of the panel you can access preset views of the selection using the thumbnails displayed.

4. Body Systems

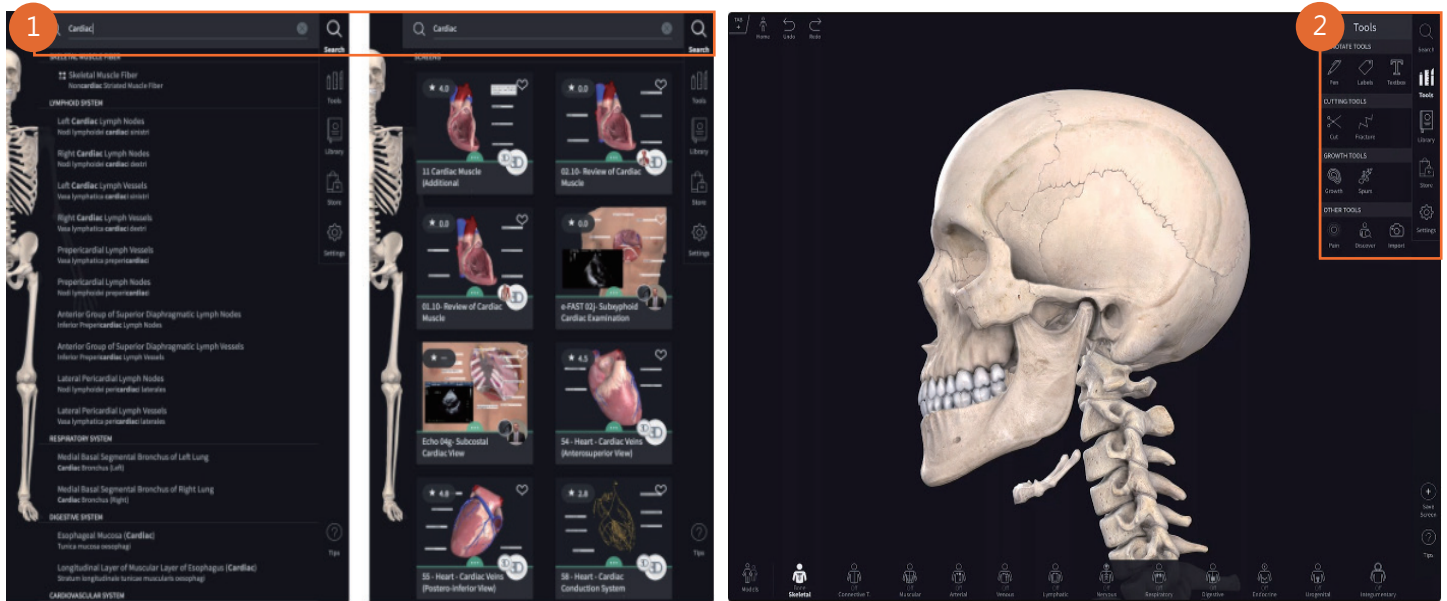
Explore 12 anatomical models of muscles, blood vessels, nerves, organs of the body.

5. View Options

Allow you to customize your view of the selection with different effect. You can reset the views of all structures in a system using the Systems Menu or reset all structures (including Tool editing) using the Reset button.

- **Hide:** Hide Removes the selected structure from view.
- **Fade:** Fade Makes the selected structure semi-transparent.
- **Isolate:** Isolate Allows you to view your selection in detail without additional structures.
- **Hide Others:** Hide Others Hides all other structures from view.
- **Fade Others:** Fade Others Fades all other visible structures

Hub includes Search, Tools, Library, Store and Setting.



1. Search

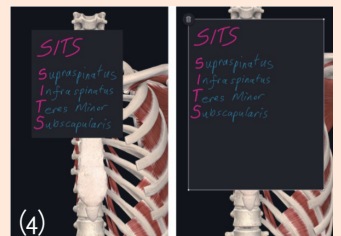
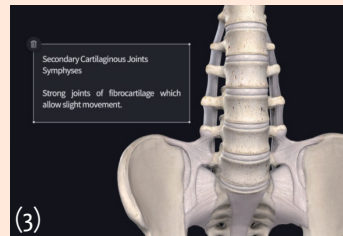
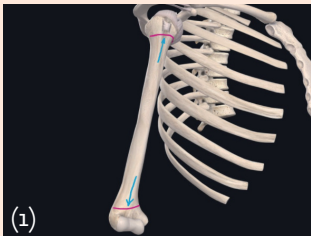
Quickly find structures, body areas, Screens, and Quizzes using the Search function.

2. Tools

Include Annotate Tools, Cutting Tools, Growth Tools and Other Tools. Clicking Undo to return to previous steps or initial page.

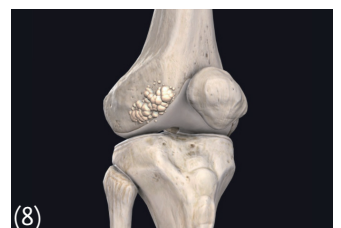
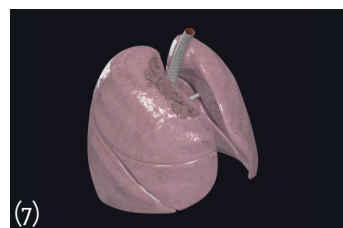
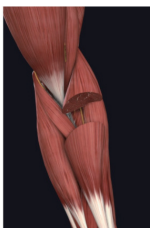
• Annotate Tools

- (1) Pen: Use 2D or 3D pens to do annotation on human anatomy flexibly. (3) Textbox: Type a note and add it to your model.
- (2) Labels: Add labels and save as your view of a structure. (4) Sketch : Sketch your thoughts to remember key details.



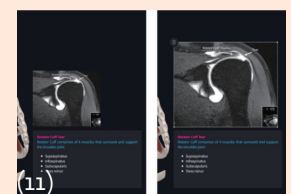
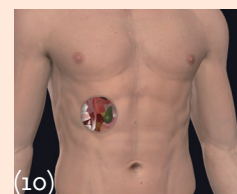
• Cutting Tools

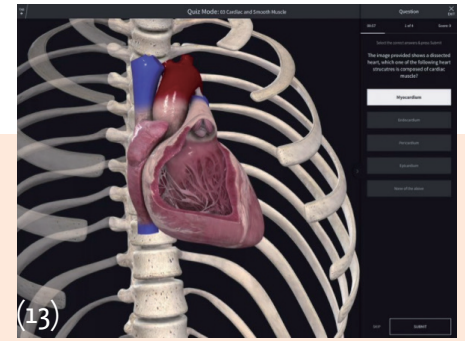
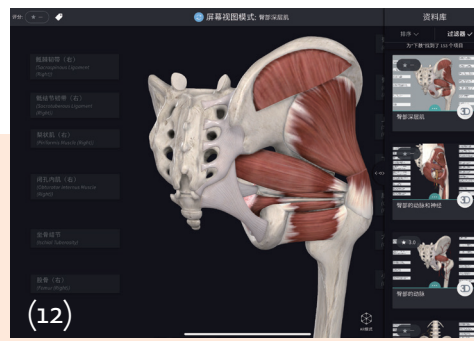
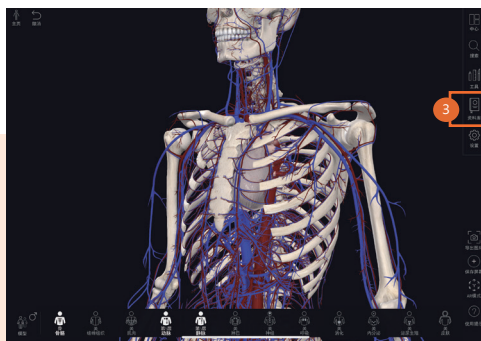
- (5) Cut & Dissect: Cut the model to explore structural connections throughout the models, and even simulating surgical procedures
- (6) Fracture: Cut bones in fractures to simulate injuries and conditions.



• Other Tools

- (9) Pain: Display pain points with illustrations and animations in the model.
- (10) Discover: Create a portal view of the body to view and select layers of the anatomy beneath the surface.
- (11) Import: Import images to match the models to reality.





3. Library

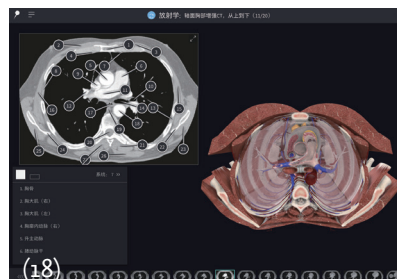
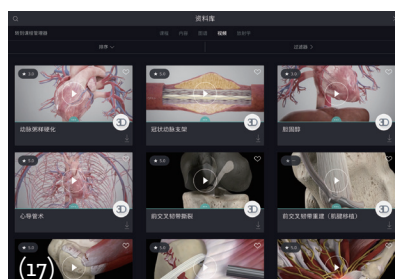
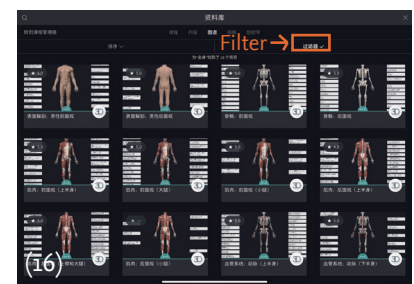
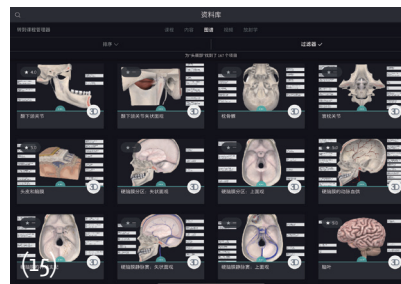
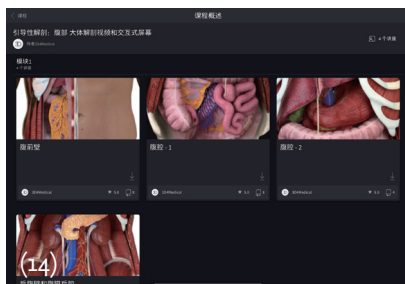
From the main menu on the right side of the screen, click “Library” to discover anatomical knowledge or learning contents, such as courses, content, Altas, videos and radiology.

(12) Screen

Enhance your learning by exploring public and group-shared screens.

(13) Quizzes

Test your knowledge by taking a quiz shared by the public, by 3D4Medical, or by your groups.



(14) Courses

Series of guided Lectures through anatomical topics, created by subject matter experts

(15) Content

You can search by name. Sort by resources (screens, quizzes or questions) and filter by resources, group or models to find what you want.

(16) Atlas

Atlas display all prefab 3D model views. You can search by name, sort by suggested, name or most recent and filter by regional models or micromodel to quickly find the screen view you want.

(17) Videos

Access over 1,500 detailed Videos. Search by name, sort by most popular, name, most recent etc. Or use filter to find what you want.

(18) Radiology

Explore a set of radiographic images to easily compare their structure to a 3D model.